

MANOMAY

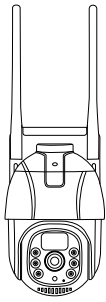
4G PROTECT GREEN

Solar Mini Pan-Tilt Camera

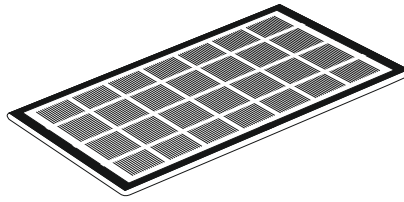


USER MANUAL

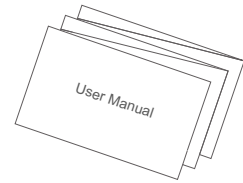
In The Box



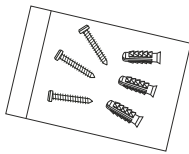
Dome Camera x 1No



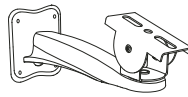
Solar Panel x 1No



User Manual Card x 1No

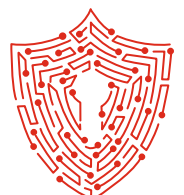
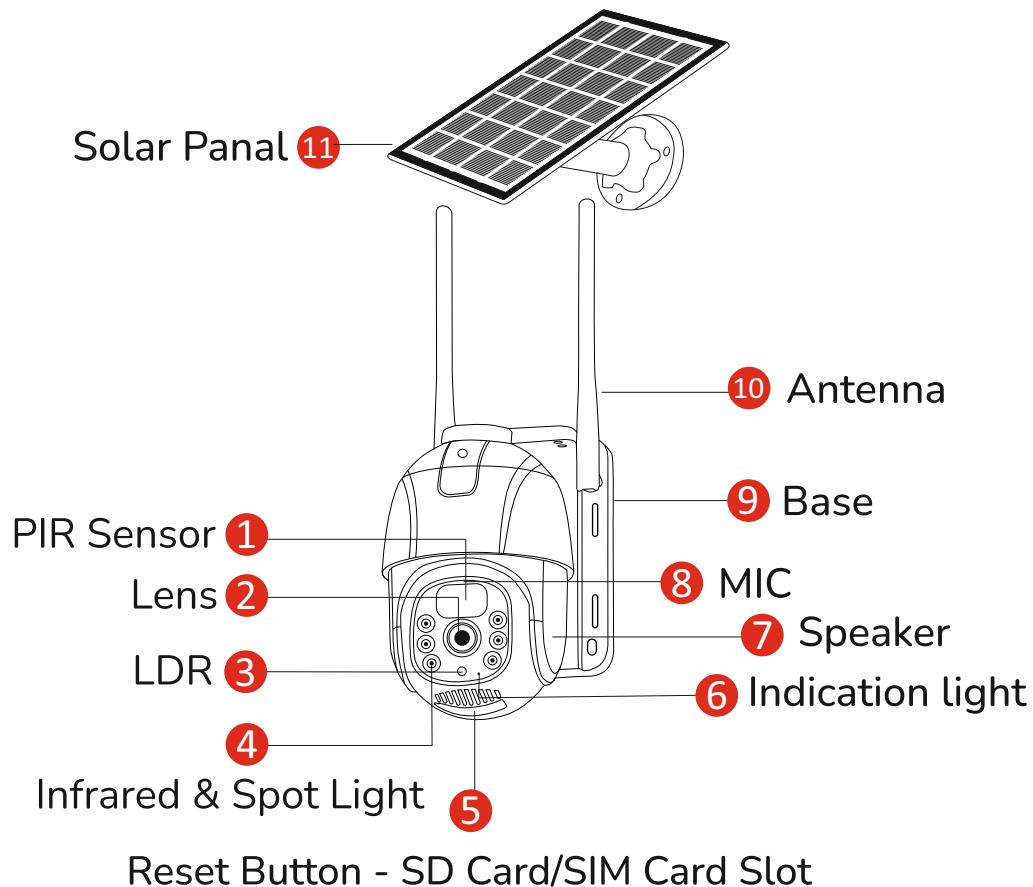


Screw Pouch x 1 Set



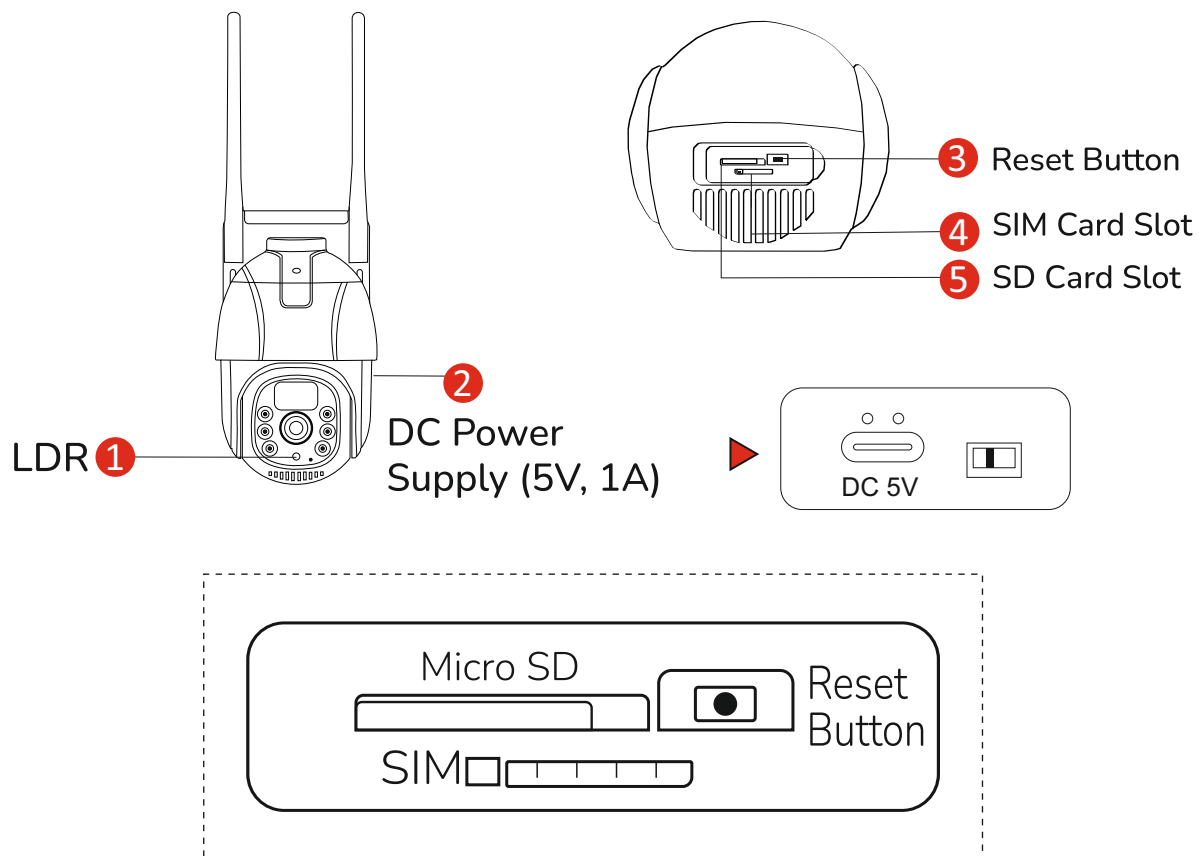
Bracket x 1No

1. 3MP 4G Protect Green Solar Mini Pan-Tilt Camera



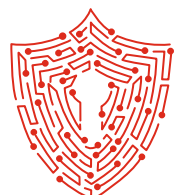
Interface Description

1. 3MP 4G Protect Green Solar Pan-Tilt Camera



Description

1. Light Sensor : The light sensor detects the ambient luminance. The infrared light will be turned on when lux level drops below 3.
2. Reset Button : During the working state of device, press the Reset Button for 3-5 seconds. This will restore the factory default settings of the camera once you hear voice prompt annunciation.
3. SD Card Slot : Insert SD Card for video storage.
4. DC Power Input : Connect 5V, 1A DC Power Supply
5. SIM Card Slot : Insert 4G SIM Card.



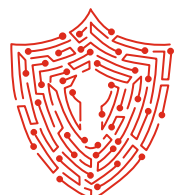
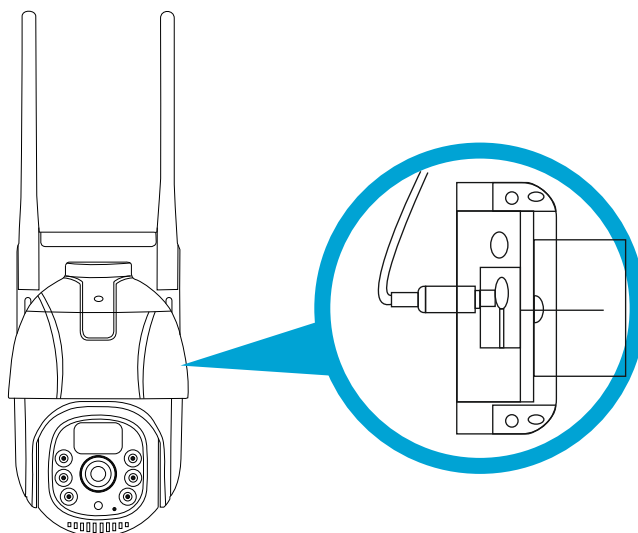
Led Indications

- Green Light & Red Light flashes for 2sec and goes out :
 - Red Light blinks continuously :
 - Red Light blinks continuously :
 - Red Light is always ON :
 - Green Light is always ON :
 - Green Light flashes continuously :
 - Green Light flashes continuously and slowly :
 - Red Light flashes 3 times quickly :
 - Red Light is always ON :
 - The traffic light is always OFF :
- The device is powered on.
 - Device connecting to the network
 - SIM Card not detected
 - The camera is being previewed remotely (privacy light)
 - The device is connected to the network or awakened
 - Upgrading
 - Charging
 - Power Off
 - Low Battery
 - In standby

Boot-up & Charging

1. Connect the camera to the solar panel.
2. Switch On the camera using the Power On switch.

Reminder : If the device does not turn on after turning the switch to ON, please check the solar panel connection cable and place the solar panel in sunlight for 2-3 hours to charge, or plug in a household charger to charge and try again.



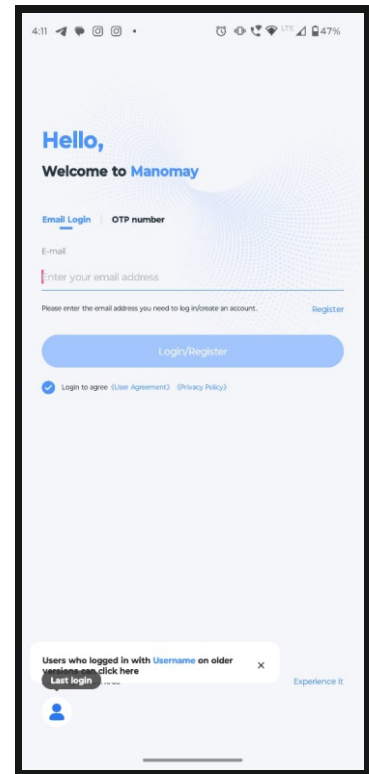
Software Installation

- Account Login :

On the Login interface, input account/ phone number/email, & the corresponding password, and click the "OK" button to log in.

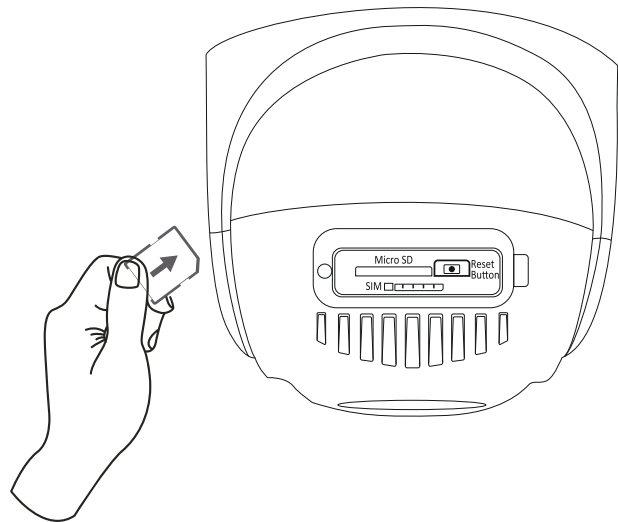
You can also login through OTP.

Third-party login : "Manomay App" supports third-party login. Click Experience it icon to jump to the "Manomay App" and complete the authorization and log in.

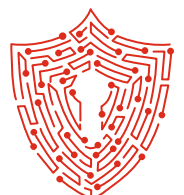


Installing the SIM Card

1. When the device is powered OFF, Insert a 4G SIM card that can access the internet into the device;

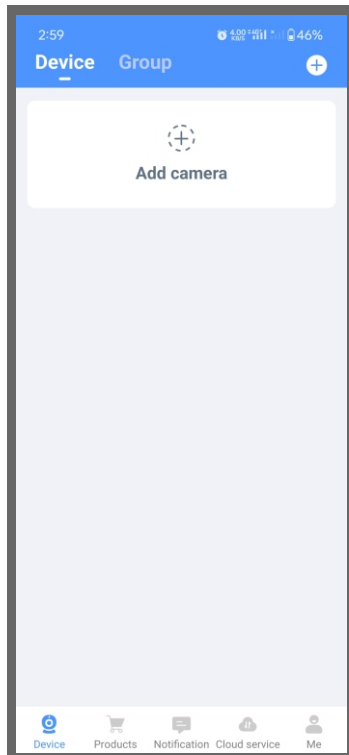


Note : Please check the SIM & SD card slots and insert the SIM and SD card in proper positions and directions. Make sure the SIM card is activated with an appropriate data plan.

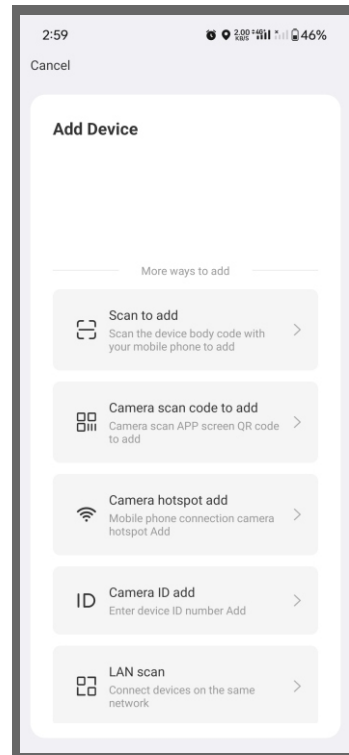


Adding the Camera in App

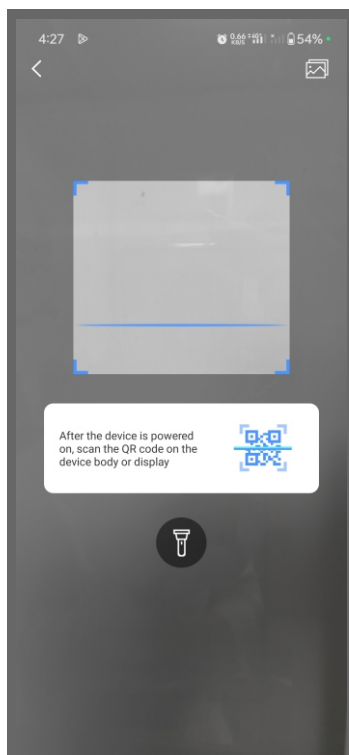
1. Open the APP and click on the “+” icon on the upper right corner to enter the scan code interface



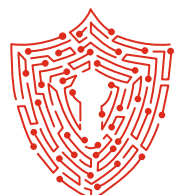
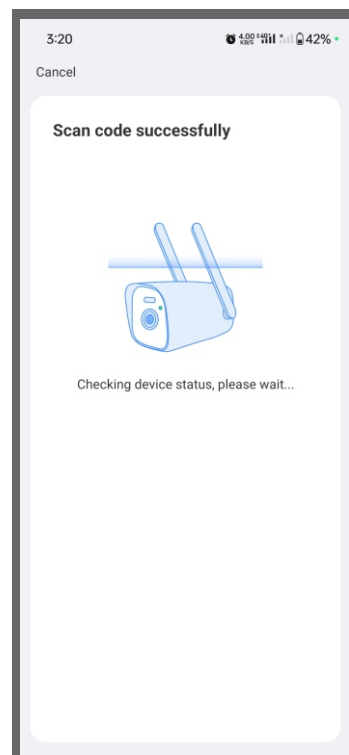
2. Click on Scan to Add



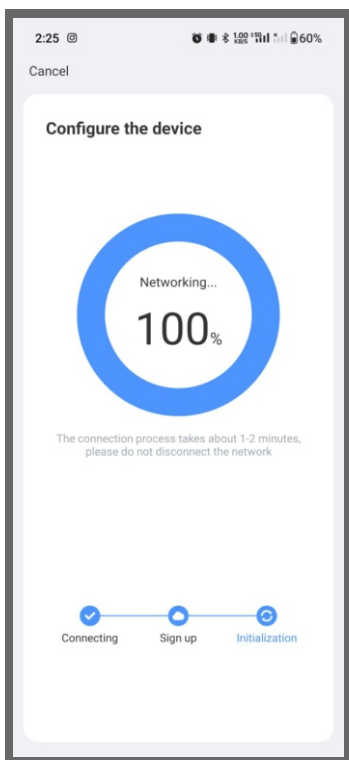
3. Scan the QR code available on the camera



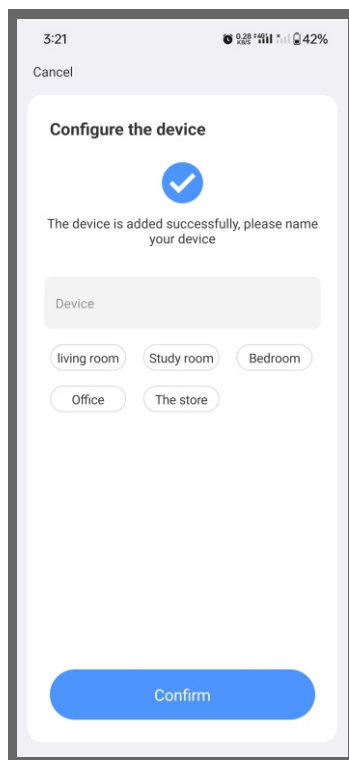
4. On the search device interface



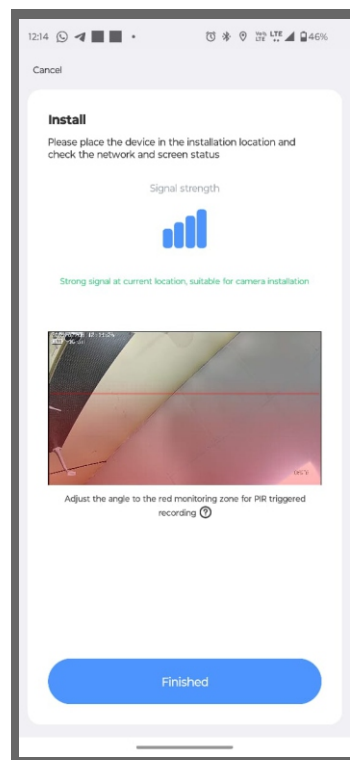
5. Please wait patiently while the device get configure.



6. Set the name for your device. click on confirm to "ADD" the device successfully

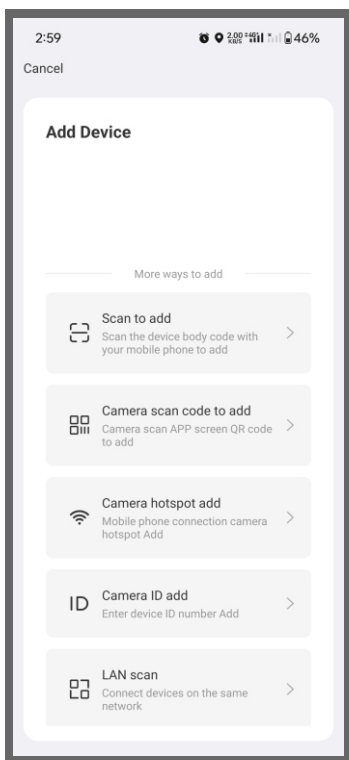


7. After set the device name click on finished

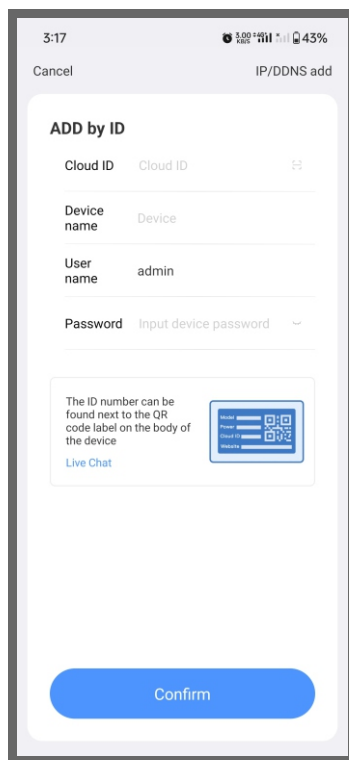


When the QR code on the device is not available or does not work follow the below instructions.

1. Click on "Camera ID ADD"



2. Enter the device ID and password and click on confirm to "ADD" the device successfully



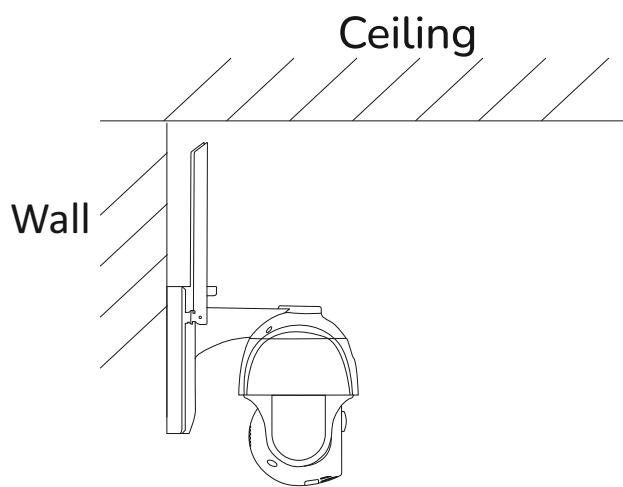
- Installation Method

4G Mini PT Camera

3.1 Wall Installation

- 1) Use the camera positioning proper to locate and punch holes. Insert the rubber plugs.
- 2) Align the hole of the camera bracket with the rubber plugs and fasten the bracket to the wall.

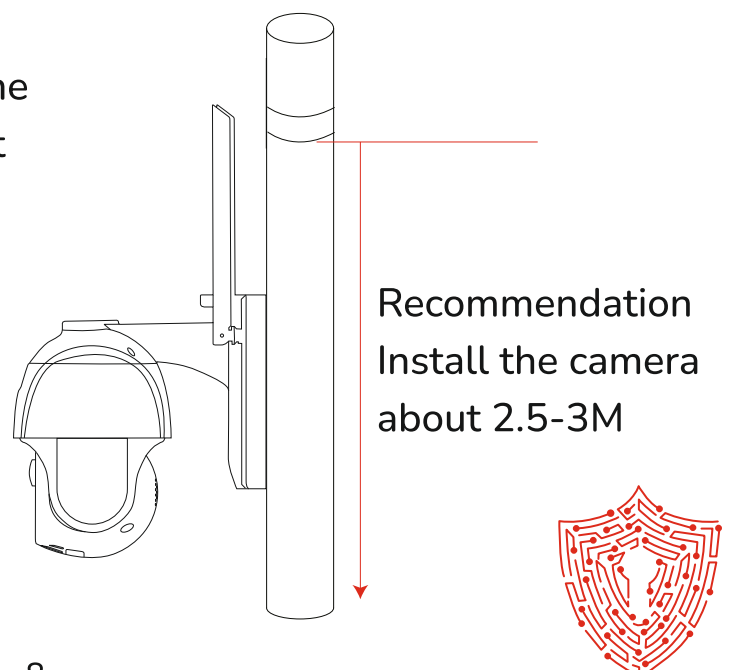
3.2 Installation on a wall Pass the metal hoop through the camera bracket hole and mount the camera on the wall.



Wall Installation

3.2 Installation on a Pole

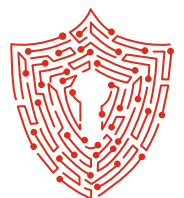
Pass the metal hoop through the camera bracket hole and mount the camera on the pole.



PIR is sensitive to hot and cold disturbances,
Please note:

Avoid installing the camera where the air flow is agitated. For eg: the air outlet of the air conditioner, the heat dissipation port of the equipment, the side of the fan, the vicinity of the curtain, etc. Please do not install the camera in front of the glass or mirror. The height of the camera installation should be 2.5M-3M, the best distance of PIR trigger.

Do not install the camera upside down.



WARNING



In case of fire or lighting, please don't put product in damp and raining place. Operate or maintain only according to the user manual.



Be careful when you see an attachment with the Dangerous Voltage Sign which might cause serious electric accident

	Warning CAUTION RISK OF ELECTRONIC SHOCK DO NOT AOPEN	
Warning	To reduce electric shock, unprofessional people please don't open product front panel or rear panel	

Warning

In case of electric shock and fire
Please don't use power supply
beyond power list in user manual

Notice

1. Ensure your equity, Please read the user manual carefully before you use the product
2. Please contact professional people if you need install and maintain the product.
3. Working Environment : temperature of -20°C~+60°C, relative humidity under 85%
4. Please do not exceed the standard range of temperature, humidity and voltage as suggested in the user manual.

