

MANOMAY

Wi-Fi PROTECT BOT Pan-Tilt Camera



USER MANUAL

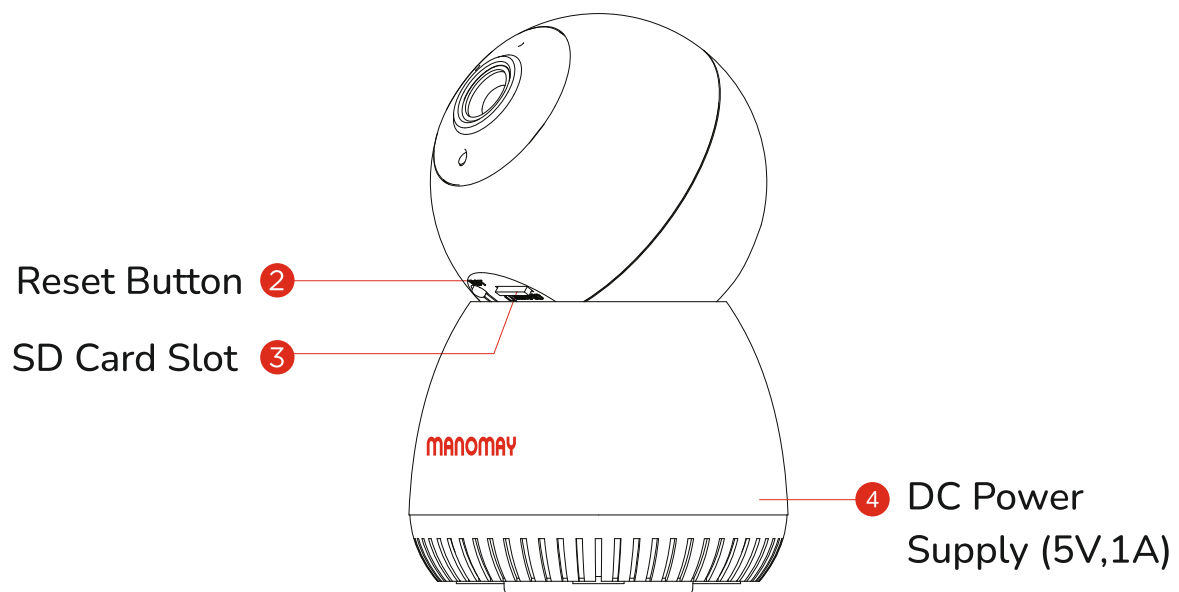
About this product

This manual is only a guide for related products and may differ from the actual product, please refer to the actual product. Due to product version upgrade or other needs, this manual may be without further notice!

Interface Description

This manual is suitable for various type of camera. (The appearance may be different due to different batches. The details are subject to the receipt. his manual is only for the installation instruction of this series of equipment)

1. Wi-Fi Protect Bot Pan-Tilt Camera

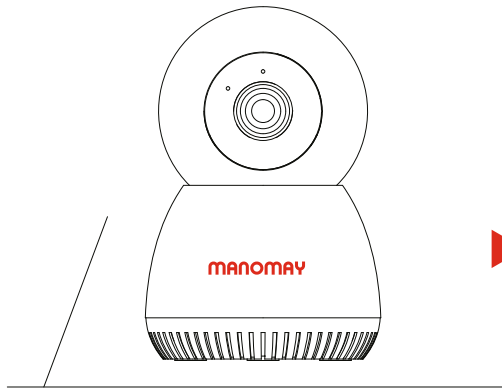


Description

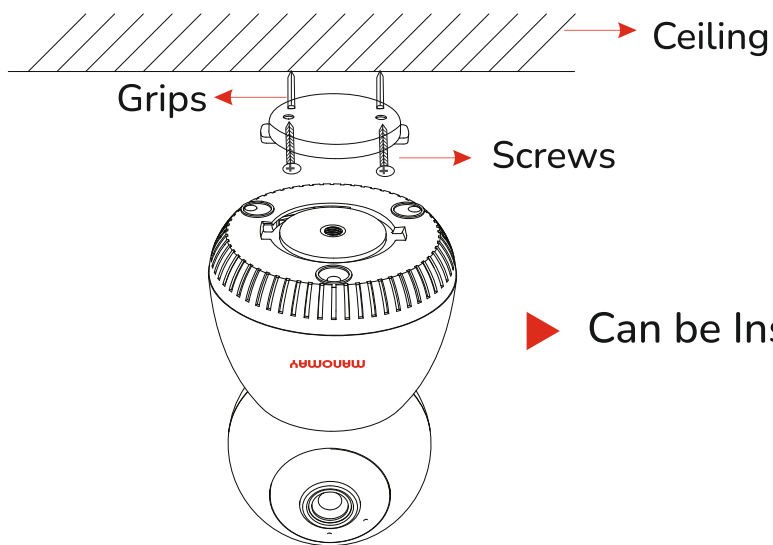
- | | |
|--------------------|---|
| 1. Photo Sensor | Collects ambient luminosity value and turns ON infrared light when the current illumination is less than 3 Lux. |
| 2. Reset Button | Long pressing this button would reset the device to factory settings. The device to factory settings. The device would produce a sound prompt for the factory reset |
| 3. SD Card Slot | To insert SD Card for Storing Video and Playback Video. |
| 4. DC Power Supply | Power Input |
| 5. Indicator Light | While configuring to Wi-Fi the indicator light flashes once every 3s. After successful network configuration the indicator light stays ON. |

Installation and Placement

1. Wi-Fi Protect Bot Pan-Tilt Camera



► Can be placed on desk or table



► Can be Installed on a ceiling

1. Insert the expansion rubber plug into the drilled ceiling, and use the screws to fix the base of the bracket to the ceiling.
2. Install the device on the bracket

Software Installation

APP Download and Installation : Use your mobile phone to scan the below QR code to download and install “Manomay App”, and follow the APP prompts to complete user registration

Note : Compatible only with iOS 9.0 and above or Android 5.0 and Above



Manomay
Android App



Manomay
iOS App

Configuring in Wi-Fi Mode

Wi-Fi Distribution Network :

1. Log in to “Manomay App”, click the “+” button on the interface (Figure 1) and enter the Scanning interface (Figure2)
2. Devices that support Bluetooth distribution network can use the Bluetooth connection method. First select the camera you want to add in the pop up box of new devices found, and click the “Add” button at the bottom (Figure 3)

(If you do not see the pop-up box, please scan the device body according to the QR code on the APP, complete device configuration and adding according to the guidance of the APP)

Note :

Before adding the camera, please make sure that the bluetooth function of the mobile phone is turned on do not turn off the Bluetooth the adding process. If a prompt box pops up to enable Bluetooth or Bluetooth authorization during the adding process, please follow the steps in the prompt to enable it.

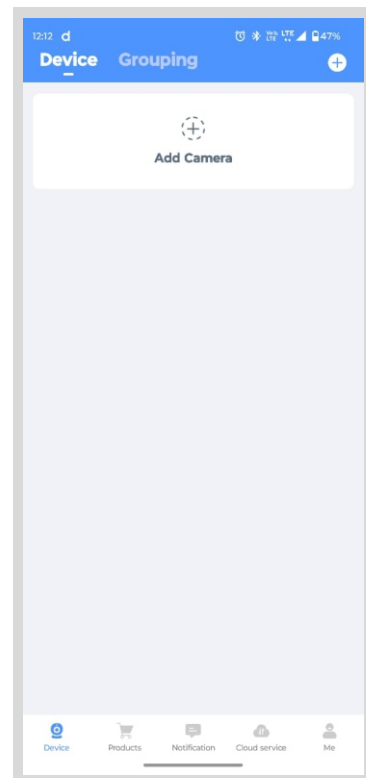


Figure 1

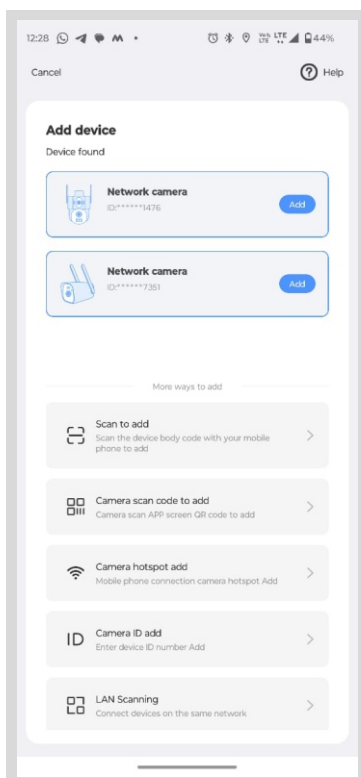


Figure 2

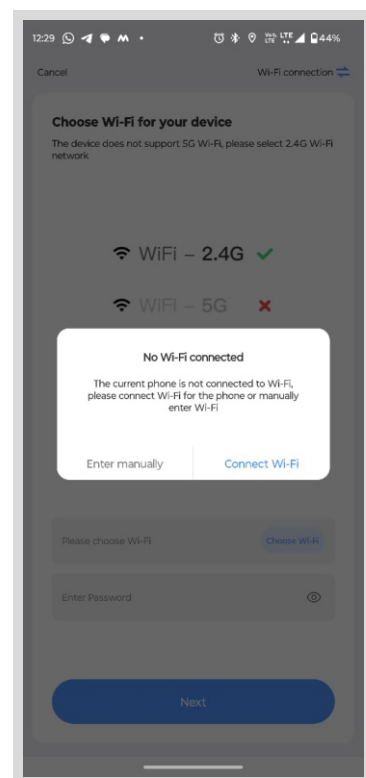
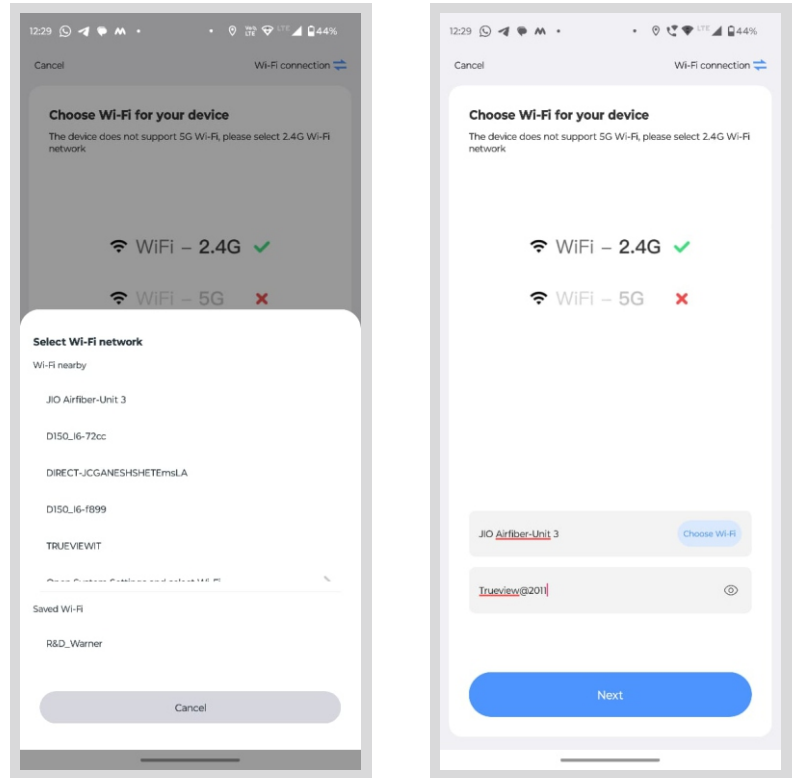
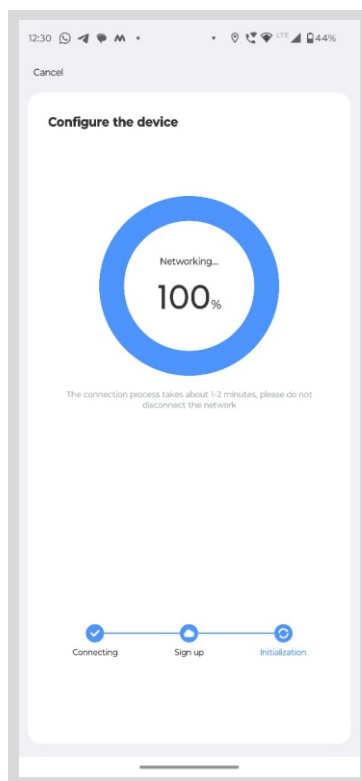


Figure 3

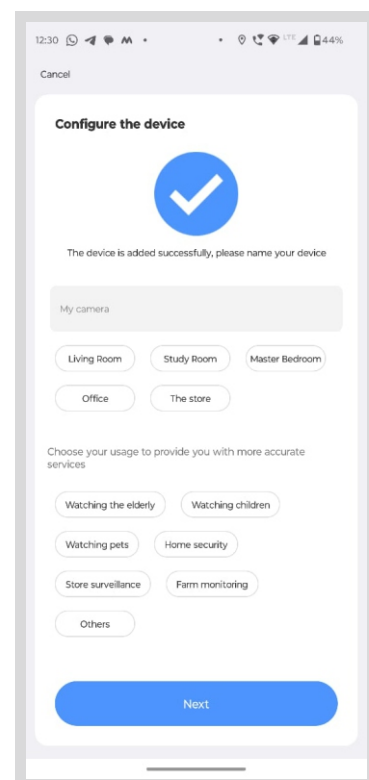
4. Select the Wi-Fi network to which the camera needs to be connected to. Enter the Wi-Fi password



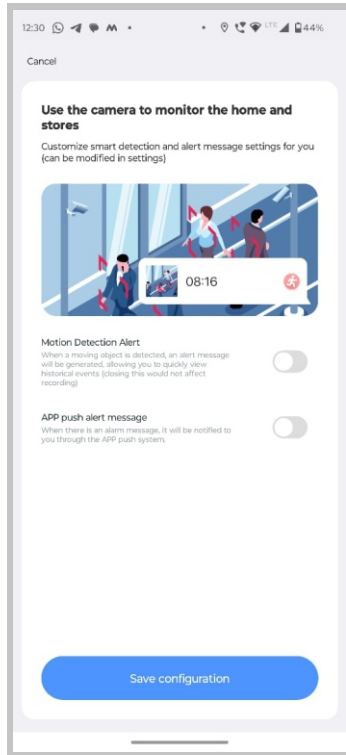
5. The configuration would take less than a minute to configure



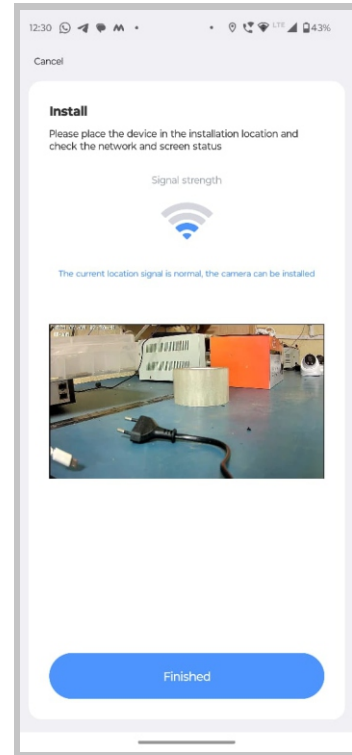
6. After the configuration is successful, set a name for the Camera and click Confirm



7. After successful configuration you can enable or disable the Motion Detection Alerts or the App Notification Alerts as desired



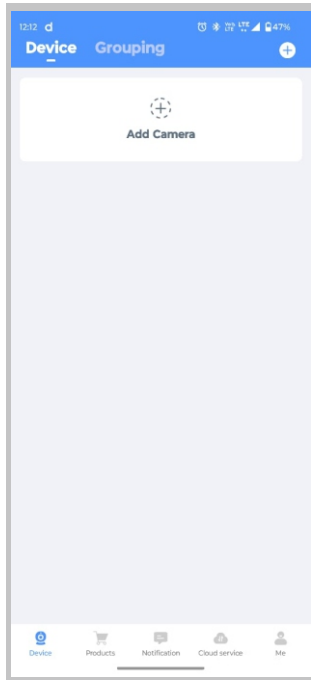
8. Place / Install the device at the desired location and ensure adequate Wi-Fi signal strength to have a smooth access to the device



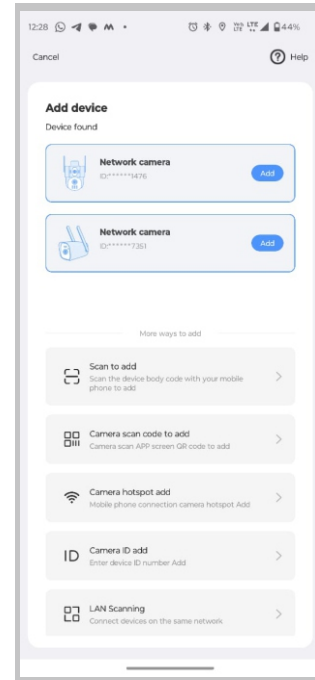
Direct Connection (Without Internet):

In case there is no Wi-Fi network near the location where the camera is to be installed, click the “Wi-Fi Distribution Network” button in the upper corner of the Wi-Fi selection Click to switch to “Direction in the pop-up window.

1. Open the APP, click the “+” icon in the middle of the interface to the scan code interface. (make the mobile Bluetooth is enabled)



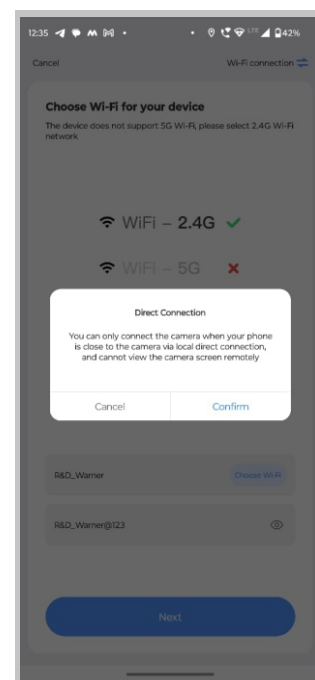
2. After clicking ‘Add Camera’ all the available devices would be displayed as a list.



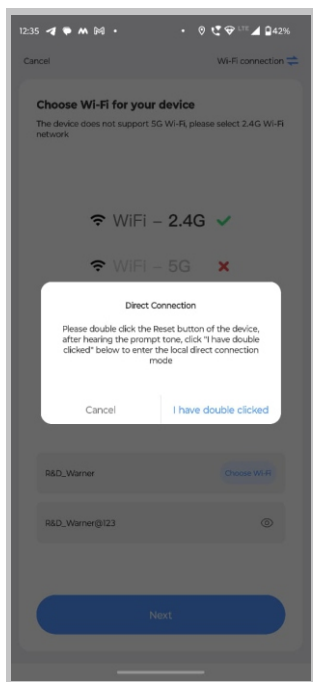
3. At the Wi-Fi selection interface click the “Direct Connection”



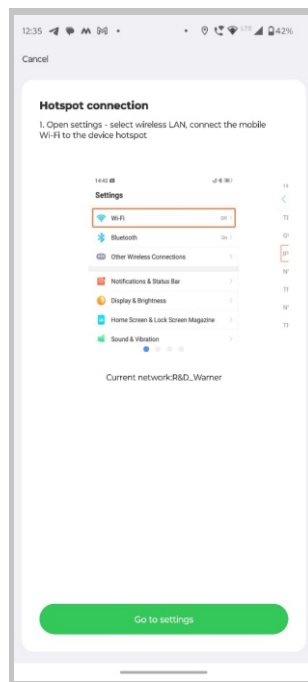
4. At the Wi-Fi selection interface click on “Confirm”



5. Press the reset button on the device twice and then click on “I Have Double Clicked”



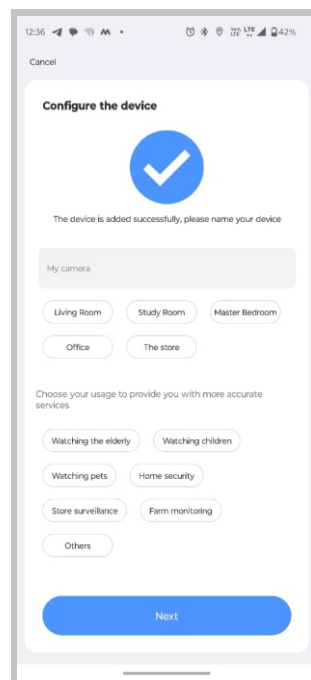
6. Go to Wi-Fi settings of mobile find camera AP name



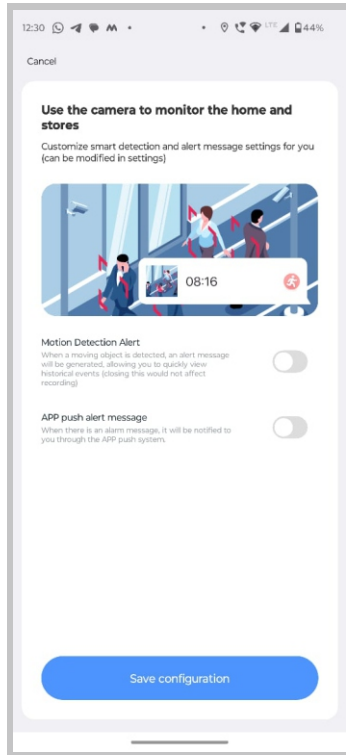
7. Select the Wi-Fi IPCS and enter Wi-Fi Password 11111111



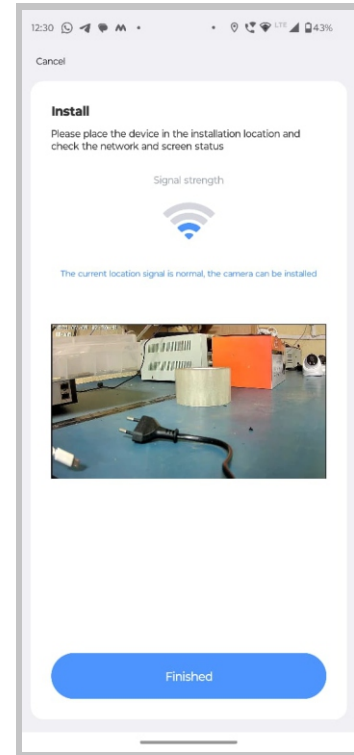
8. Select name for the device or enter a name and confirm



9. After successful configuration you can enable or disable the Motion Detection Alerts or the App Notification Alerts as desired



10. Place / Install the device at the desired location and ensure adequate Wi-Fi signal strength to have a smooth access to the device



Note. The direct connection needs to be connected to the Camera's AP Mode to preview the camera screen normally. in this mode the camera cannot be viewed remotely

WARNING



In case of fire or lighting, please don't put product in damp and raining place. Operate or maintain only according to the user manual.



Be careful when you see an attachment with the Dangerous Voltage Sign which might cause serious electric accident

	Warning CAUTION RISK OF ELECTRONIC SHOCK DO NOT AOPEN	
Warning	To reduce electric shock, unprofessional people please don't open product front panel or rear panel	

Warning

In case of electric shock and fire
Please don't use power supply
beyond power list in user manual

Notice

1. Ensure your equity, Please read the user manual carefully before you use the product
2. Please contact professional people if you need install and maintain the product.
3. Working Environment : temperature of -20°C~+60°C, relative humidity under 85%
4. Please do not exceed the standard range of temperature, humidity and voltage as suggested in the user manual.