

MANOMAY

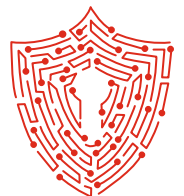
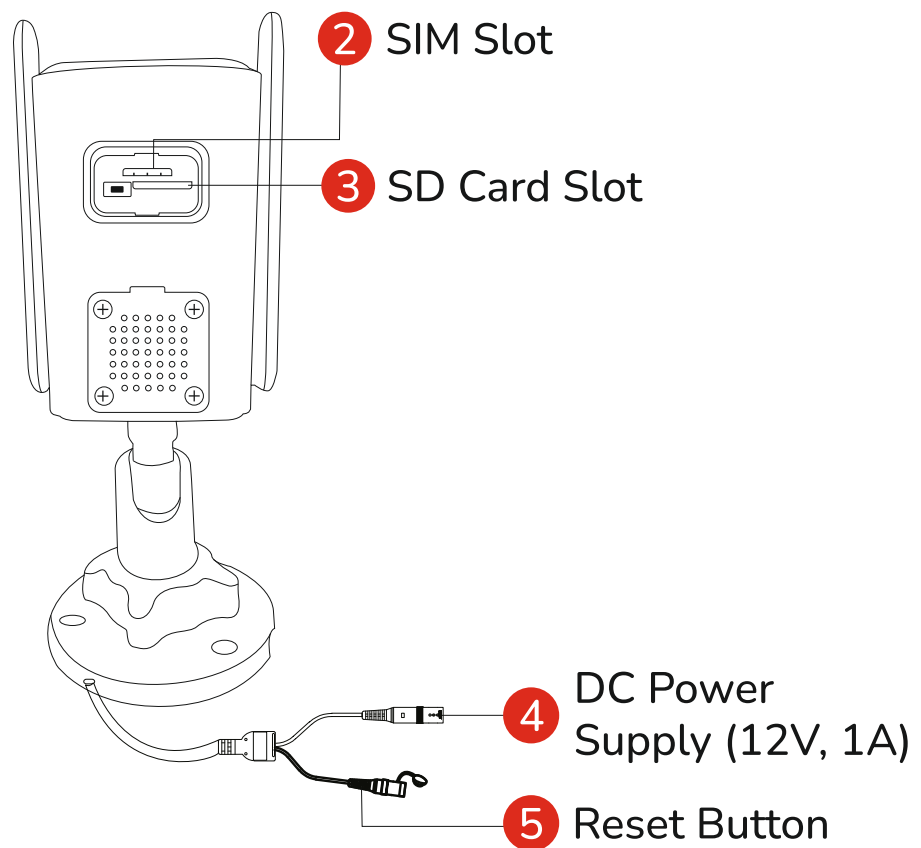
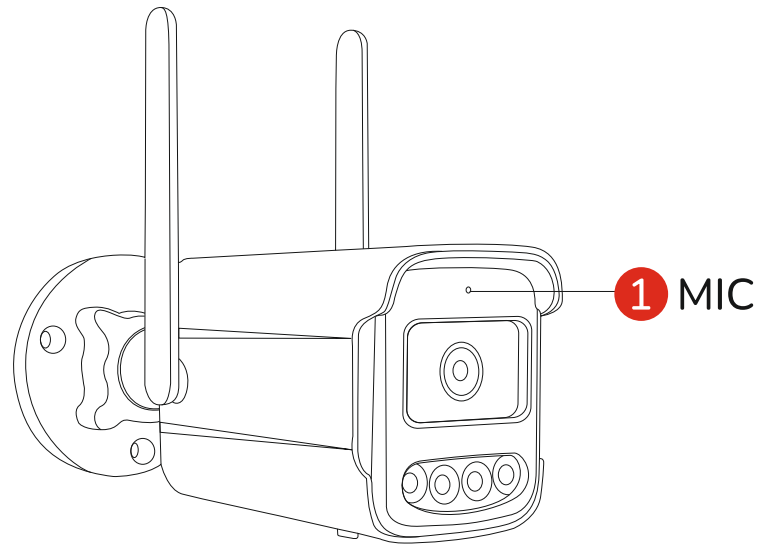
4G PROTECT AIR **Bullet Camera**



USER MANUAL

Interface Description

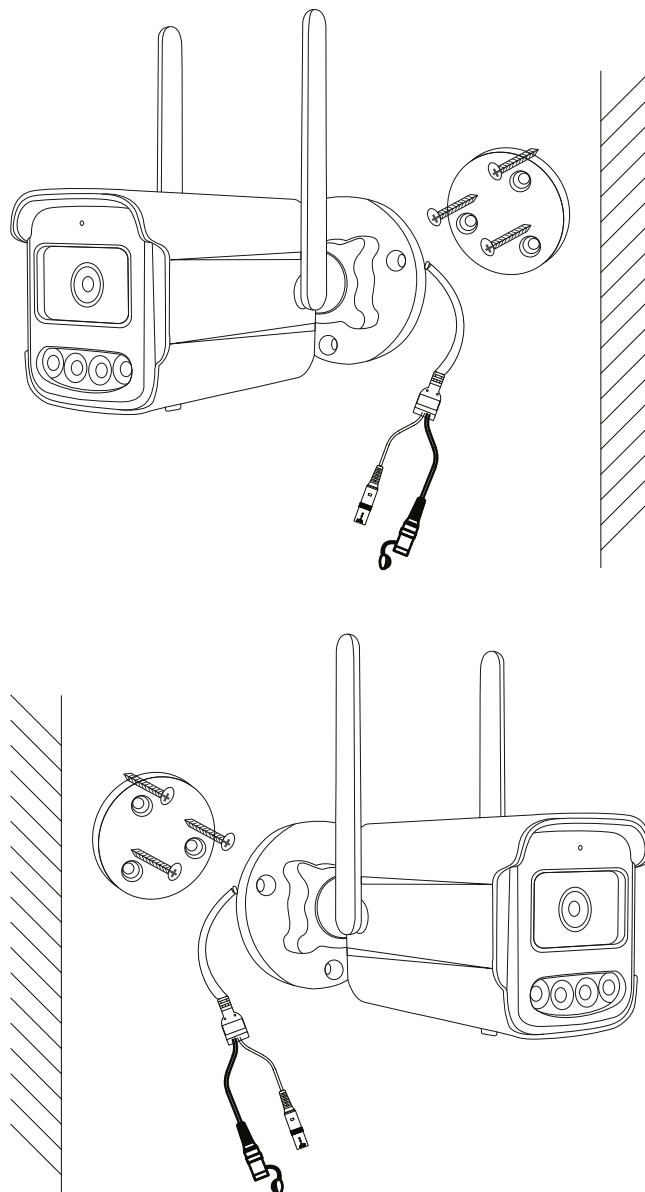
1. 3MP 4G Protect Air Bullet Camera



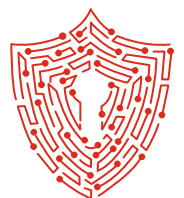
Interface Description

2. 3MP 4G Protect Air Bullet Camera

1. Select a suitable wall bracket and install the bracket to the wall, using the fixtures & screws. Mount the camera to the bracket.
2. Tighten the vertical and horizontal adjustment screws to adjust the camera to the desired monitoring scene, and then tighten the adjustment screws to complete the installation.



Wall Installation



• Software Installation

A) APP Download and Installation

Users can search for “Manomay App” on App store or Google Play. You can also install the App by scanning the QR code.



Manomay
Android App



Manomay
iOS App

Note: The app requires iOS version 9.0 or Android version 5.0 or above.

B) Account Login

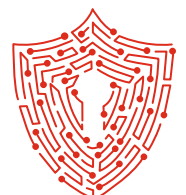
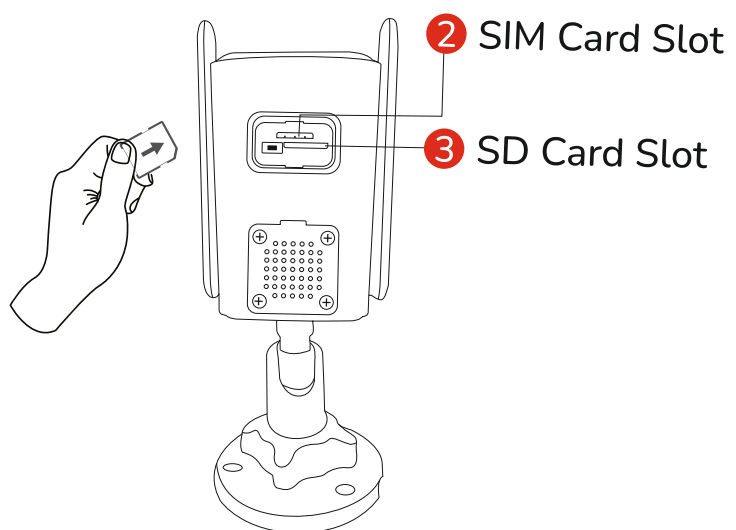
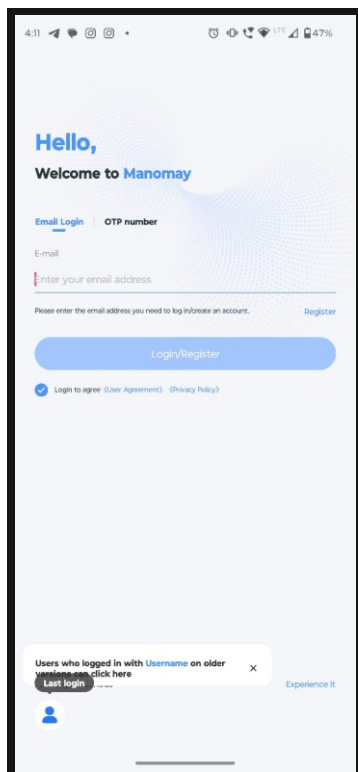
On the login interface, enter the account/ phone number/ email, and the corresponding password, click "OK" button to log in.

You can also login through OTP number

Third-party login (optional) : The APP supports third-party login. Click the third-party social software icon, go to the APP to complete the authorization and log in.

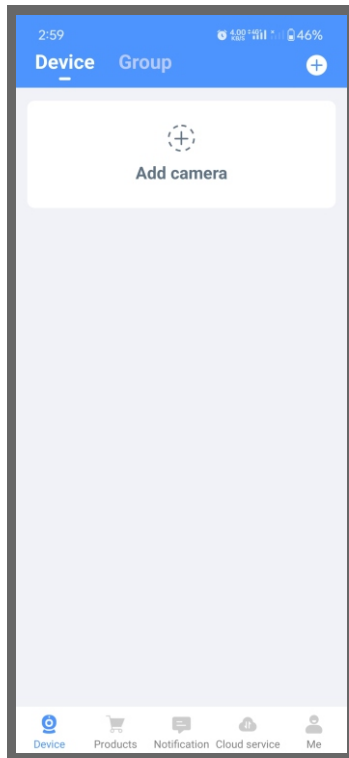
C) 4G SIM Card Installation

1. When the device is powered off, insert a 4G card that can access the Internet into the device.

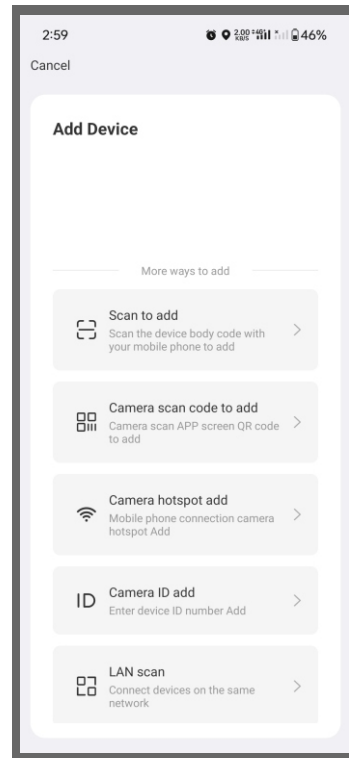


Adding the Camera in App

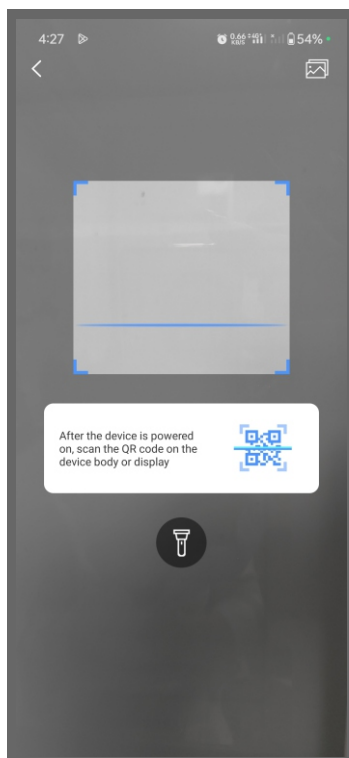
1. Open the APP and click on the “+” icon on the upper right corner to enter the scan code interface



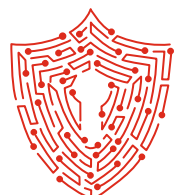
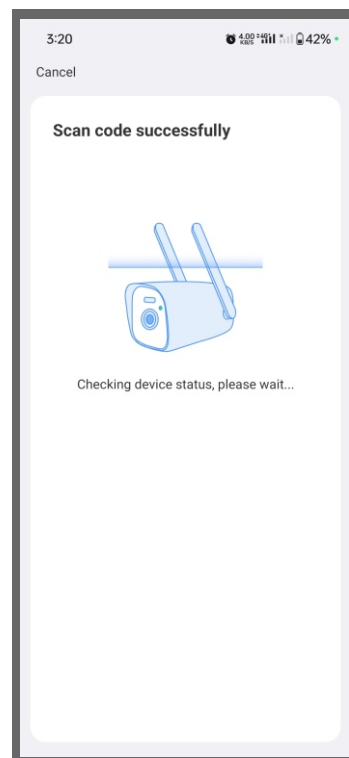
2. Click on Scan to Add



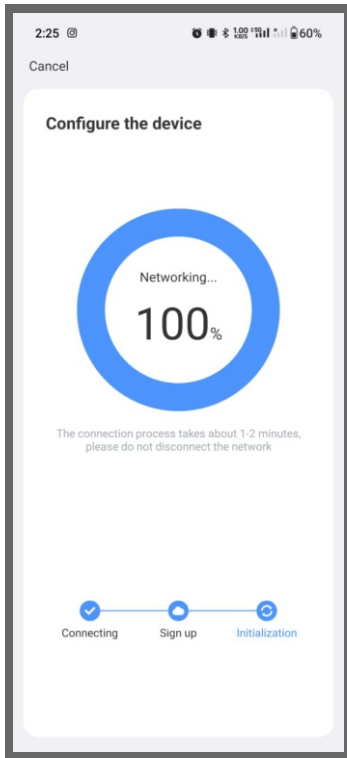
3. Scan the QR code available on the camera



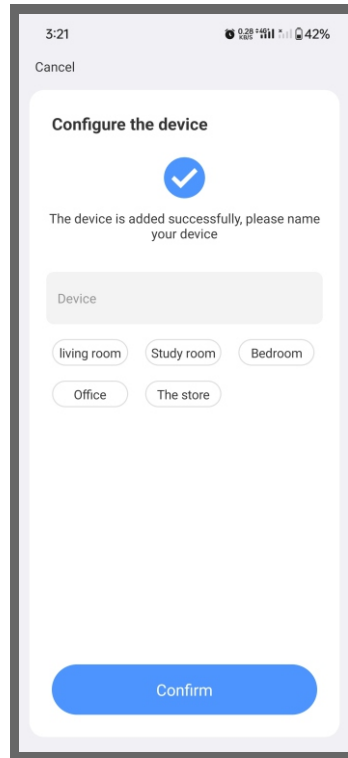
4. On the search device interface



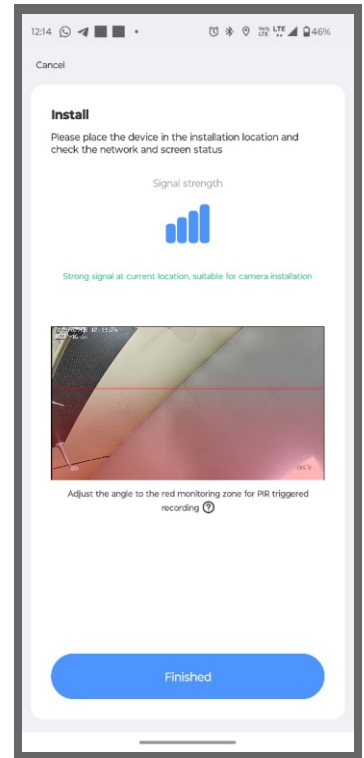
5. Please wait patiently while the device get configure.



6. Set the name for your device. click on confirm to "ADD" the device successfully

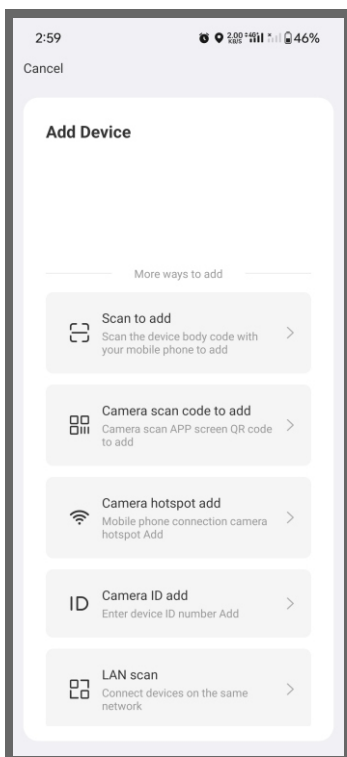


7. After set the device name click on finished

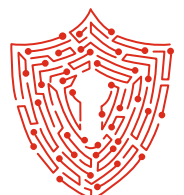
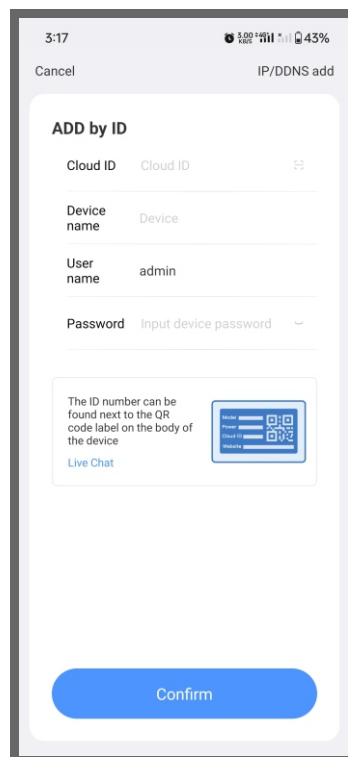


When the QR code on the device is not available or does not work follow the below instructions.

1. Click on "Camera ID ADD"



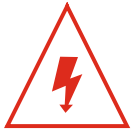
2. Enter the device ID and password and click on confirm to "ADD" the device successfully



WARNING



In case of fire or lighting, please don't put product in damp and raining place. Operate or maintain only according to the user manual.



Be careful when you see an attachment with the Dangerous Voltage Sign which might cause serious electric accident

| | | |
|----------------|--|--|
| | Warning CAUTION RISK OF ELECTRONIC SHOCK DO NOT AOPEN | |
| Warning | To reduce electric shock, unprofessional people please don't open product front panel or rear panel | |

Warning

In case of electric shock and fire
Please don't use power supply
beyond power list in user manual

Notice

1. Ensure your equity, Please read the user manual carefully before you use the product
2. Please contact professional people if you need install and maintain the product.
3. Working Environment : temperature of -20°C~+60°C, relative humidity under 85%
4. Please do not exceed the standard range of temperature, humidity and voltage as suggested in the user manual.

